



Circular saws

Manual circular metal saws

HKS

Metal dry cutter

MTS

Circular metal saws

MKS

MKS N

MKS R

MKS H

Vertical circular metal saws

MKS V

MKS VH

Circular light metal saws

LMS

LMS H

LMS A

LMS PRO M

LMS PRO S

LMS PRO P

LMS PRO DS

LMS PRO DC



Manual circular metal saws



Circular metal saws



Vertical circular metal saws



Circular light metal saws

Important note

We only use saw blades which are steam-finished (HSS DM 05).

What does the steam finish effects? By evaporating at 500°C a controlled oxidation is being achieved. An iron oxide layer ($Fe_3 O_2$) is generated on the surface of the saw blade, which improves the gliding properties and will at the same time protect against corrosion. Furthermore, tensions inside the blade are removed by what the risk of fracture is being reduced and the durability will considerably increase. Therefore, order your saw blade only with METALLKRAFT.

HKS 230 - manual circular metal saws for the factory and on the construction site to cut aluminium, steel and stainless steel

- the ideal machine for assembly companies, pointers, locksmith's shops, repair companies, shelf builders, booth builders, welding shops, heating and ventilation builders
- perfectly usable, where parting-off grinders are not powerful enough or are working unneatly
- cuts stainless steel almost without burr nor warping
- chips carry off the heat, this way only little heat development when cutting
- **heavy-duty motor with smooth starting and overload protection**

- cuts without spark formation due to internal suction unit
- cutting cost are extremely low
- best appropriate to be used in shops and on construction sites
- it is possible to plunge into the material
- perfect for the preparation of welding seams
- uncomplicated and rapid cutting depth setting by means of a precise and easy-to-read scale
- solid and robust structure

- handle can be screwed in at two different positions for easy handling of the saw at any position
- cut steel profiles, sheet metal, corrugated slabs, composite materials, aluminium, stainless steel and trapezoidal sheetings, etc.
- easy operation

- with two fold guided parallel stop for exact cutting guidance

- rapid saw blade change by gear retention pin



- with setting for orientation for free-hand cuts

- infinitely variable and easy setting of the mitre angle; grid at 0°, 15°, 30° and 45°



- uncomplicated and rapid cutting depth setting by means of a precise and easy readable scale



- handle can be mounted at another position for mitre cuts, so that the saw can be safely guided parallel to the cutting layer

Model	HKS 230 *
Item No	384 0231
€ plus VAT	289.00

Technical data	
Motor power 230 V / 50 Hz	1.7 kW
Speeds	2600 min ⁻¹
Cutting range 90° □ / wall thickness	82 mm
Cutting range 45° □ / wall thickness	56 mm
Max. saw blade diameter	Ø 230 mm
Saw blade boring	Ø 25.4 mm
Saw blade thickness	2 mm
Dimensions (LxWxH)	520 x 320 x 270 mm
Weight	7.1 kg

* Machine is delivered in a solid plastic case without saw blade

Saw blades designed specially for the machines and the corresponding applications:



Saw blades	Blade thickness	Number teeth	Item No	€ plus VAT
Steel	2.0 mm	48	385 0231	52.95
Aluminium	2.4 mm	80	385 0232	65.95
Stainless steel	1.8 mm	60	385 0233	69.95

MTS 356 - metal dry cutter, saw metal without coolant

- extremely solid and robust structure
- easy to transport
- **for sawing of profiles and tubes made of steel, iron, copper, brass, aluminium, plastic material, composite materials and stainless steel with little burrs without coolant**
- no sparks are generated when cutting
- application e.g. in the metal construction, in carpenter's shops, for interior constructions, etc.
- motor with smooth start-up due to easy handling when switching on the saw
- **as standard with a prism clamping jaw to position the material**
- **Quick-action vice**
- 5-times longer durability by positioning the material at an angle of 45° in the prism vice - the prism jaws which are required are optionally available
- safe stand due to aluminium die cast foot
- angle and parallel stop for mitre cuts up to 45°
- with depth stop for precise cuts
- with extractable chip collection box
- with spindle detent for more rapid saw blade replacement



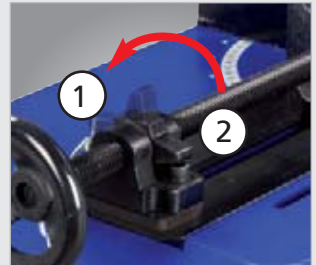
Base
collapsible
Item No 335 1490
€ 69.00 plus VAT



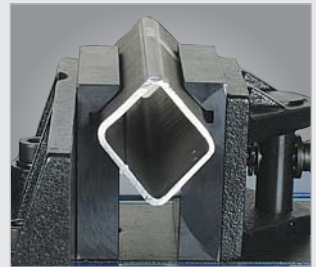
Prism clamping jaw
1 piece is included in the delivery



- easily read the mitre angle from the scale
- mitre exactly and comfortably adjustable with grid in 15° steps
- vice continuously slewable from 0 to 45°
- Quick-action vice



- the saw is equipped with a quick-action vice. By moving the lever it is switched over between quick-clamping (pos. 1) and clamping (pos. 2)



- 5-times longer service life by chucking the material at an angle of 45° into the prism vice (second prism jaws optional, Item No 385 0355)

Scope of delivery

- 4, 6 and 8 mm spanner
- safety goggles
- 1 prism clamping jaw
- without saw blade

Model	MTS 356
Item No	384 0355
€ plus VAT	399.00

Technical data	
Motor power 230 V / 50 Hz	2.2 kW
Speeds	1300 1/min
Cutting range 0°	100 x 180 mm (H x W)
Cutting range 0°	120 x 120 mm
Cutting range 0°	132 mm
Cutting range +/-45°	120 x 90 mm (H x W)
Cutting range +/-45°	90 x 90 mm
Cutting range +/-45°	105 mm
Saw blade diameter	Ø 355 mm
Weight	23.5 kg



Steel



Aluminium



Stainless steel

Accessories	Item No	€ plus VAT
Base MTS 356	335 1490	69.00
Prism clamping jaw	385 0355	15.95
Saw blades	Number	
Ø 355 x 2.4 x 25.4 mm teeth		
- Steel	66	385 3504 129.00
- Aluminium	80	385 3502 119.00
- Stainless steel	90	385 3503 159.00
Ø 305 x 2.4 x 25.4 mm		
- Steel	60	385 3051 109.00

Manual circular metal saws with one and two speeds as well as mitre slewable sawing head and vice

- for steel, iron, light metals, solid material and profiles
- two cutting speeds (except for 230 V)
- reduction gear, running silently in an oil bath
- automatic membrane coolant pump with coolant filter as standard
- mobile safety device provides for an optimum safety when cutting
- control handle with safety switch
- electric installation at low-voltage 24 volts, with emergency-stop switch, main switch, speed selector switch and overload protection
- machine head can be turned by 45° to the left

Equipment from MKS 250 N:

- machine head can be turned 45° to the left and to the right from MKS 250 on
- vice slewable by 45° to the left and by 45° to the right
- quick-action vice with anti-burr device guarantees for a precise cut free from burrs



· slewed saw blade



· slewed vice



MKS 250 N
Scope of delivery as standard



Model	MKS 250 N	MKS 255 N	MKS 275 N
Item No	362 0251	362 0253	362 0275
€ plus VAT	879.00	939.00	1'089.00
Technical data			
Motor power 50 Hz	0.9 kW / 230 V	0.95/1.32 kW / 400 V	1.1/1.5 kW / 400 V
Speeds	40 1/min	40/80 1/min	40/80 1/min
Opening of vice	100 mm	100 mm	105 mm
Saw blade diameter	Ø 250 mm	Ø 250 mm	Ø 275 mm
Infeed height including base	975 mm	975 mm	975 mm
Required floor space in mm	800 x 830 x 755	800 x 830 x 755	830 x 900 x 1025
Weight	83 kg	83 kg	98 kg



Quality
Made in
Europe

Accessories



Chip lifting device "Chipmag"
· magnetic Item No 385 0010,
€ 39.90 plus VAT



Micro dosing unit MD 1
· for circular and belt saws
Item No 360 6000,
€ 345.00 plus VAT ²⁾
· spray nozzle, Item No 360 6001,
€ 55.00 plus VAT



Micro dosing unit MD2
· universally applicable for
minimum lubrication of
tool inserts and metal-forming
tools
· separate air and spray duct,
therefore no dripping
· with extra large lubricant tank,
frequency-controlled pump and
spray nozzle
Item No 360 7000
€ 895.00 plus VAT ²⁾



MKS 250 N
MKS 255 N
· double vice,
slewable from
-45° to +45° with
quick clamping

Scope of delivery:
· coolant equipment
· length stop 500 mm
· operating tools
· without saw blade
· without base



MKS 275 N
Scope of delivery:
· coolant equipment
· length stop 500 mm
· operating tools
· without saw blade
· without base

Cutting capacity MKS 250 N / MKS 255 N

	●	○	□	▭
90°	40	70	70 x 70	55 x 95
45°	35	65	55 x 55	50 x 60
45° +	35	65	55 x 55	50 x 60

Cutting capacity MKS 275 N

	●	○	□	▭
90°	45	80	80 x 80	100 x 70
45° ¹⁾	40	80	55 x 55	80 x 70
45° + ²⁾	40	80	70 x 70	80 x 70

Accessories

	Item No	€ plus VAT
Machine base MKS 250 N/255 N/275N	364 2571	185.00
Coolant concentrate 5 litres	360 1751	39.90
Spray 5 litres micro dosing unit	360 6002	95.50
Assembly micro dosing unit	900 2000	165.00

Saw blades MKS 250/255 N

HSS saw blade DM05 Ø250x2x32 mm t4 1)	365 2504	59.00
HSS saw blade DM05 Ø250x2x32 mm t6 1)	365 2506	59.00

Saw blades MKS 275 N

HSS saw blade DM05 Ø275x2.5x32 mm t4 1)	365 2754	79.00
HSS saw blade DM05 Ø275x2.5x32 mm t6 1)	365 2756	79.00
HSS saw blade DM05 Ø275x2.5x32 mm t8 1)	365 2758	79.00

1) t = toothing 2) price without assembly to the saw

Manual circular metal saws with 315 mm saw blade, two speeds as well as mitre slewable saw head and vice

- two cutting speeds (except for 230 V)
- machine head is turnable by 45° to the left and 45° to the right
- reduction gear, running silently in an oil bath
- automatic membrane coolant pump with coolant filter as standard
- quick-action vice with anti-burr device, slewable by 45° to the left and 45° to the right
- vice with longitudinal movement and this way appropriate for longitudinal cuts and for slotting

- mobile safety device provides for an optimum safety when cutting
- control handle with safety switch
- electric installation at low-voltage 24 volts, with emergency-stop switch, main switch, speed selector switch and overload protection

Equipment MKS 315 R / MKS 316 R

- with adjustable sliding clutch by what a fracture of the saw blade can be excluded
- MKS 316 R very well appropriate to machine stainless steel due to the slow speeds



· *slewed saw blade*



· *slewed vice*



MKS 315 N

Scope of delivery:

- coolant equipment
- length stop 500 mm
- operating tools
- without saw blade
- without base

Model	MKS 315 N	MKS 315 R	MKS 316 R
Item No	362 0303	362 1315	362 1316
€ plus VAT	1'479.00	2'289.00	2'289.00
Technical data			
Motor power 50 Hz	1.5/2.2 kW / 400 V	1.5/2.2 kW / 400 V	1.32/1.91 kW / 400 V
Speeds	40/80 1/min	40/80 1/min	20/40 1/min
Opening of vice	120 mm	120 mm	120 mm
Saw blade diameter	Ø 315 mm	Ø 315 mm	Ø 315 mm
Infeed height including base	1015 mm	1015 mm	1015 mm
Required floor space in mm	1000 x 1150 x 1475	1000 x 1150 x 1475	1000 x 1150 x 1475
Weight	150 kg	170 kg	170 kg



Qualiyt
Made in
Europe

Accessories



Chip lifting device "Chipmag"

- magnetic Item No 385 0010,
€ 39.90 plus VAT



Micro dosing unit MD 1

- for circular and belt saws
- with holding magnet
Item No 360 6000,
€ 345.00 plus VAT ²⁾
- spray nozzle, Item No 360 6001,
€ 55.00 plus VAT



Micro dosing unit MD2

- universally applicable for
minimum lubrication of tool
inserts and metal-forming
tools
- separate air and spray duct,
therefore no dripping
- with extra large lubricant
tank, frequency-controlled
pump and spray nozzle
Item No 360 7000,
€ 895.00 plus VAT ²⁾



MKS 315 R / MKS 316 R

Scope of delivery

- coolant equipment with filter
- material support arm with roll
- length stop 500 mm
- operating tools
- without saw blade
- without base

Cutting capacity MKS 315 N

	●	○	□	▭
90°	55	90	80 x 80	115 x 70
45° ¹⁾	50	80	55 x 55	55 x 55
45° + ²⁾	50	80	55 x 55	55 x 55

Cutting capacity MKS 315 R / 316 R

	●	○	□	▭
90°	65	90	85 x 85	120 x 70
45° ¹⁾	60	80	70 x 70	80 x 70
45° + ²⁾	60	80	70 x 70	80 x 70

¹⁾ The cut runs in direction of the vice, which limits the cutting capacity
²⁾ In this case the cut runs away from the vice.

Accessories

	Item No	€ plus VAT
Machine base MKS 315 N/315 R/316 R	364 3171	185.00
Coolant concentrate 5 litres	360 1751	39.90
Spray 5 litres micro dosing unit	360 6002	95.50
Assembly micro dosing unit	900 2000	165.00

Saw blades MKS 315 N/315 R/316 R

HSS saw blade DM05 Ø315x2.5x32 mm t4 1)	365 3154	105.00
HSS saw blade DM05 Ø315x2.5x32 mm t6 1)	365 3156	105.00
HSS saw blade DM05 Ø315x2.5x32 mm t8 1)	365 3158	105.00

Saw blades for stainless steel MKS 315 R

HSS-E saw blade Ø315x2.5x32 mm t4 1)	365 3254	149.00
HSS-E saw blade Ø315x2.5x32 mm t6 1)	365 3256	149.00

¹⁾ t = tothing ²⁾ price without assembly to the saw

MKS 350 - manual circular metal saw with saw blade 350 mm MKS 350 H - semi-automatic type

- solid and robust structure
- two cutting speeds as standard
- machine head is slewable by 45° to the left and by 90° to the right
- reduction gear, running silently in an oil bath
- with membrane coolant pump with filter
- double vice with counter vice and anti-burr clamping jaws guarantees for a precise cut free from burrs

- vice with longitudinal movement and this way appropriate for longitudinal cuts and for slotting.
- quick-action vice, slewable by 45° to the left and 45° to the right
- adjustable blade protection coupling
- mobile safety device provides for an optimum safety when cutting

- electric installation at low-voltage 24 volts, with emergency-stop switch, main switch, speed selector switch and overload protection
- control handle with safety switch
- MKS 351 very well appropriate to machine steel due to the slow speeds



· slewed saw blade



· slewed vice



MKS 350 / MKS 351

Scope of delivery:

- coolant equipment
- length stop 500 mm
- operating tools
- without saw blade
- without base

Model	MKS 350	MKS 351	MKS 350 H
Item No	362 1350	362 1351	362 0352
€ plus VAT	2'549.00	2'649.00	5'119.00
Technical data			
Motor power 400 V/50 Hz	1.8/2.4 kW	1.5/2.2 kW	1.8/2.4 kW
Speeds	40/80 1/min	20/40 1/min	40/80 1/min
Opening of vice	120 mm	120 mm	120 mm
Saw blade diameter	Ø 350 mm	Ø 350 mm	Ø 350 mm
Infeed height including base	1040 mm	1040 mm	1040 mm
Required floor space in mm	1000x1200x1475	1000x1200x1475	1000x1200x1475
Weight	210 kg	210 kg	280 kg



Quality
Made in
Europe

Functionality semiautomatic machine MKS 350 H

- closing the vice and activation of the motor
- lowering the saw head for cutting
- stopping the motor and return of the saw head in the initial position
- opening the vice



MKS 350 H

Scope of delivery:

- coolant equipment
- length stop 500 mm
- operating tools
- without saw blade
- incl. base

Accessories



Chip lifting device "Chipmag"

- magnetic Item No 385 0010,
€ 39.90 plus VAT



Micro dosing unit MD 1

- for circular and belt saws
- with holding magnet
Item No 360 6000,
€ 345.00 plus VAT²⁾
- spray nozzle, Item No 360 6001,
€ 55.00 plus VAT



Micro dosing unit MD2

- universally applicable for
minimum lubrication of
tool inserts and metal-forming
tools
- separate air and spray duct,
therefore no dripping
- with extra large lubricant tank,
frequency-controlled pump and
spray nozzle
Item No 360 7000,
€ 895.00 plus VAT²⁾

Cutting capacity MKS 350 / MKS 351 / MKS 350 H

	●	○	□	▭
90°	60	110	100 x 100	120 x 80
45° ¹⁾	55	80	80 x 80	80 x 80
45° + ²⁾	55	80	80 x 80	80 x 80

¹⁾ The cut runs in direction of the vice, which limits the cutting capacity
²⁾ In this case the cut runs away from the vice.

Accessories

	Item No	€ plus VAT
Machine base MKS 350/351	364 3171	185.00
Coolant concentrate 5 litres	360 1751	39.90
Spray 5 litres micro dosing unit	360 6002	95.50
Assembly micro dosing unit	900 2000	165.00

Saw blades MKS 350/351/350 H

HSS saw blade DM05Ø 350x2.5x32 mm t4 1)	365 3504	129.00
HSS saw blade DM05Ø 350x2.5x32 mm t6 1)	365 3506	129.00

Saw blades for stainless steel MKS 351

HSS-E saw blade Ø 350x2.5x32 mm t4 1)	365 3514	169.00
HSS-E saw blade Ø 350x2.5x32 mm t6 1)	365 3516	169.00

¹⁾ t = tothing²⁾ price without assembly to the saw

MKS 315 V - manual vertical circular metal saw with saw blade 315 mm

MKS 316 V - type with lower speed to saw stainless steel



- solid and robust structure
- easy and trouble-free operation
- two cutting speeds
- machine head vertically guided, with dovetail guide and adjustable V-ledge, slewable by 45° to the left and by 60° to the right with detent at 45°, 0°, -45°, 60°
- adjustable depth stop for the vertical stroke of the saw head
- reduction gear, running silently in an oil bath
- coolant pump with coolant filter
- coolant jet distribution, for a better lubrication of the saw blade
- cross-sliding vice with anti-burr device
- chip breaker to clean the blade
- electric installation at low-voltage 24 volts, with emergency-stop switch, main switch, speed selector switch and overload protection
- control handle with safety switch



Model	MKS 315 V	MKS 316 V
Item No	362 2315	362 2316
€ plus VAT	3'799.00	4'019.00

Technical data

	MKS 315 V	MKS 316 V
Motor power 400V / 50 Hz	1.3/1.8 kW	1.4/2.0 kW
Speeds	33/66 1/min	17/34 1/min
Opening of vice	160 mm	160 mm
Saw blade diameter	Ø 315 mm	Ø 315 mm
Infeed height including base	910 mm	910 mm
Required floor space in mm	1500x650x1700	1500x650x1700
Weight	270 kg	270 kg

Cutting capacity

	●	○	□	▭
90°	70	100	90 x 90	135 x 80
45°	70	100	90 x 90	100 x 80
45° +	70	100	90 x 90	100 x 80
60° +	70	80	70 x 70	70 x 80

Scope of delivery

- coolant equipment with filter
- material support arm with roll
- length stop 500 mm
- operating tools
- without saw blade



Magnetic chip lifting device "Chipmag"

Accessories

	Item No	€ plus VAT
Coolant concentrate 5 litres	360 1751	39.90
Chipmag (chip lifting device)	385 0010	39.90
Micro dosing unit MD1 - 230 volts	360 6000	345.00 2)
Spray nozzle MD 1 for circular/belt saws	360 6001	55.00 2)
Micro dosing unit MD2 - 230 volts	360 7000	895.00 2)
Assembly micro dosing unit	900 2000	165.00
Spray 5 litres micro dosing unit	360 6002	95.50

Saw blades MKS 315 V/316 V

HSS saw blade DM05 Ø 315x2.5x32 mm t4 1)	365 3154	105.00
HSS saw blade DM05 Ø 315x2.5x32 mm t6 1)	365 3156	105.00
HSS saw blade DM05 Ø 315x2.5x32 mm t8 1)	365 3158	105.00

Saw blades for stainless steel MKS 316 V

HSS-E saw blade Ø315x2.5x32 mm t4 1)	365 3254	149.00
HSS-E saw blade Ø315x2.5x32 mm t6 1) 3)	65 3256	149.00

¹⁾ t = tothing ²⁾ price without assembly to the saw



MKS 350 V - manual vertical circular metal saw with saw blade 350 mm

- solid and robust structure
- easy and trouble-free operation
- two cutting speeds
- machine head vertically guided, with dovetail guide and adjustable V-ledge, slewable by 45° to the left and by 60° to the right with detent at 45°, 0°, -45°, 60°
- adjustable depth stop for the vertical stroke of the saw head
- reduction gear, running silently in an oil bath
- coolant pump with coolant filter
- coolant jet distribution for a better lubrication of the saw blade
- cross-sliding vice with anti-burr device
- chip breaker to clean the blade
- electric installation at low-voltage 24 volts, with emergency-stop switch, main switch, speed selector switch, low-voltage release and overload protection
- control handle with safety switch



Model	MKS 350 V
Item No	362 2350
€ plus VAT	4'939.00

Technical data	
Motor power 400 V / 50 Hz	1.9/2.5 kW
Speeds	36/72 1/min
Opening of machine vice	185 mm
Saw blade diameter	Ø 350 mm
Infeed height including base	905 mm
Required floor space	1050 x 1000 x 1850 mm
Weight	450 kg

Cutting capacity

	●	○	□	▭
90°	100	100	90 x 90	170 x 90
45°	100	100	90 x 90	125 x 90
45° +	100	100	90 x 90	125 x 90
60° +	90	90	90 x 90	90 x 90

Scope of delivery

- coolant equipment with filter
- material roller conveyor 1000 mm
- length stop 500 mm
- operating tools
- without saw blade



Accessories	Item No	€ plus VAT
Coolant concentrate 5 litres	360 1751	39.90
Chipmag (chip lifting device)	385 0010	39.90
Micro dosing unit MD1 - 230 volts	360 6000	345.00 2)
Spray nozzle MD 1 for circular/belt saws	360 6001	55.00 2)
Micro dosing unit MD2 - 230 volts	360 7000	895.00 2)
Assembly micro dosing unit	900 2000	165.00
Spray 5 litres micro dosing unit	360 6002	95.50

Saw blades MKS 350 V

HSS saw blade DM05 Ø 350x2.5x32 mm t4 1)	365 3504	129.00
HSS saw blade DM05 Ø 350x2.5x32 mm t6 1)	365 3506	129.00
HSS saw blade DM05 Ø 350x2.5x32 mm t8 1)	365 3508	129.00
HSS saw blade DM05 Ø 350x2.5x32 mm t10 1)	365 3510	129.00

¹⁾ t = tothing ²⁾ price without assembly to the saw

MKS 350 VH - semi-automatic vertical circular metal saw with saw blade 350 mm



- solid and robust structure
- easy and trouble-free operation
- two cutting speeds
- machine head vertically guided, with dovetail guide and adjustable V-ledge, slewable by 45° to the left and by 60° to the right with detent at 45°, 0°, -45°, 60°
- adjustable depth stop for the vertical stroke of the saw head
- reduction gear, running silently in an oil bath
- coolant pump with coolant filter
- coolant jet distribution for a better lubrication of the saw blade
- cross-sliding pneumatic vice with anti-burr device
- chip breaker to clean the blade
- electric installation at low-voltage 24 volts, with emergency-stop switch, main switch, speed selector switch low-voltage release and overload protection

Functionality semiautomatic machine

- closing the vice and activation of the motor
- lowering the saw head for cutting
- stopping the motor and return of the saw head in the initial position
- opening the vice



Accessories



Micro dosing unit MD2

- universally applicable for minimum lubrication of tool inserts and metal-forming tools
 - separate air and spray duct, therefore no dripping
 - with extra large lubricant tank, frequency-controlled pump and spray nozzle
- Item No 360 7000

Scope of delivery

- coolant equipment with filter
- material roller conveyor 1000 mm
- length stop 500 mm
- operating tools
- without saw blade

Model	MKS 350 VH
Item No	362 3350
€ plus VAT	6'839.00

Technical data	
Motor power 400 V / 50 Hz	1.9/2.5 kW
Speeds	36/72 1/min
Opening of machine vice	185 mm
Saw blade diameter	Ø 350 mm
Infeed height including base	905 mm
Required floor space	2640 x 1200 x 2000 mm
Weight	480 kg

Cutting capacity				
	●	○	□	▭
90°	100	100	90 x 90	170 x 90
45°	100	100	90 x 90	125 x 90
45° +	100	100	90 x 90	125 x 90
60° +	90	90	90 x 90	90 x 90

Accessories	Item No	€ plus VAT
Coolant concentrate 5 litres	360 1751	39.90
Chipmag (chip lifting device)	385 0010	39.90
Micro dosing unit MD1 - 230 volts	360 6000	345.00 2)
Spray nozzle MD 1 for circular/belt saws	360 6001	55.00 2)
Micro dosing unit MD2 - 230 volts	360 7000	895.00 2)
Assembly micro dosing unit	900 2000	165.00
Spray 5 litres micro dosing unit	360 6002	95.50

Saw blades MKS 350 VH		
HSS saw blade DM05 Ø 350x2.5x32 mm t4 1)	365 3504	129.00
HSS saw blade DM05 Ø 350x2.5x32 mm t6 1)	365 3506	129.00
HSS saw blade DM05 Ø 350x2.5x32 mm t8 1)	365 3508	129.00
HSS saw blade DM05 Ø 350x2.5x32 mm t10 1)	365 3510	129.00

¹⁾ t = tothing ²⁾ price without assembly to the saw

LMS 400 / LMS 400 H - manual and semi-automatic circular saw for light metal with saw blade 400 mm



Quality
Made in
Europe

- circular sawing machine to cut solid material and profiles made of aluminium and light metal alloys
- solid and robust structure
- easy and trouble-free operation
- precise cutting
- saw head is turnable by 45° to the left and by 45° to the right
- easy turning of the saw head by 45° due to positioning bolts
- rotary table is mounted on bearings
- saw shaft is mounted on bearings

LMS 400

- manual type
- two manual vices with clamping jaws made of Teflon
- saw head can be inclined by 45° to the left

LMS 400 H

- semi-automatic type
- two pneumatic quick-action vices with clamping jaws made of Teflon



LMS 400
Fig. with optional base



LMS 400 H

Accessories



Micro dosing unit MD 1

- with holding magnet
Item No 360 6000
- Spray nozzle for circular/belt saws
Item No 360 6001



Micro dosing unit MD 2

- universally applicable for minimum lubrication of tool inserts and metal-forming tools
- separate air and spray duct, therefore no dripping
- with extra large lubricant tank, frequency-controlled pump and spray nozzle
Item No 360 7000

Model	LMS 400	LMS 400 H
Item No	362 5400	362 5401
€ plus VAT	2'449.00	4'799.00

Technical data

Motor power 400 V / 50 Hz	2.2 kW	2.2 kW
Speeds	3000 1/min	3000 1/min
Opening of machine vice	220 mm	220 mm
Saw blade diameter	Ø 400 mm	Ø 400 mm
Infeed height including base	855 mm	855 mm
Required floor space in mm	1500x1000x900	1500x1000x1600
Weight	160 kg	210 kg

Scope of delivery LMS 400

- length stop 500 mm
- operating tools
- without base

Scope of delivery LMS 400 H

- material support arm with roll
- length stop 500 mm
- operating tools

Cutting capacity

	●	○	□	▭
90°	60	140	110 X 110	180 X 100
45°	60	130	100 X 100	150 X 100
45° +	60	130	100 X 100	150 X 100
60° +	-	-	-	-

Accessories

Accessories	Item No	€ plus VAT
Machine base LMS 400	364 4071	185.00
HM saw blade Ø 400 x 4.0 x 32 mm z96	365 4048	185.00
HM saw blade Ø 400 x 3.0 x 32 mm z84	365 4049	185.00
Micro dosing unit MD1 - 230 volts	360 6000	345.00 1)
Spray nozzle MD 1 for circular/belt saws	360 6001	55.00 1)
Micro dosing unit MD2 - 230 volts	360 7000	895.00 1)
Assembly micro dosing unit	900 2000	165.00
Spray 5 litres micro dosing unit	360 6002	95.50

1) Price without assembly to the saw

LMS 400 A - automatic circular light metal saw with saw blade 400 mm



- automatic circular sawing machine to cut solid material and profiles made of aluminium and light metal alloys
- solid and robust structure
- easy and trouble-free operation
- precise cutting
- rotary table is mounted on bearings
- saw shaft is mounted on bearings
- two pneumatic quick-action vices with clamping jaws made of Teflon

Functionality automatic machine

- material feed
- closing the vice and activation of the motor
- activation of the coolant pump
- lowering of the saw head up to the finishing of the cut
- stopping of the motor
- return of the feed wagon up to the determined dimension
- return of the saw head in the initial position
- opening the vice
- repeating of the cycle



Cutting capacity

	●	○	□	▭
90°	60	130	110 X 110	180 X 100
45°	-	-	-	-
45° +	-	-	-	-
60° +	-	-	-	-

Model	LMS 400 A
Item No	362 5404
€ plus VAT	14'389.00

Technical data	
Motor power 400 V / 50 Hz	2.2 kW
Speeds	3000 1/min
Opening of machine vice	180 mm
Saw blade diameter	Ø 400 mm
Infeed height including base	910 mm
Required floor space	3800 x 1600 x 1700 mm
Weight	510 kg

Scope of delivery

- material roller conveyor 1000 mm
- length stop 500 mm
- operating tools

Accessories	Item No	€ plus VAT
HM saw blade Ø 400 x 4.0 x 32 mm z96	365 4048	185.00
HM saw blade Ø 400 x 3.0 x 32 mm z84	365 4049	185.00
Micro dosing unit MD1 - 230 volts	360 6000	345.00 1)
Spray nozzle MD 1 for circular/belt saws	360 6001	55.00 1)
Micro dosing unit MD2 - 230 volts	360 7000	895.00 1)
Assembly micro dosing unit	900 2000	165.00
Spray 5 litres micro dosing unit	360 6002	95.50

1) Price without assembly to the saw



Micro dosing unit MD2

- with spray nozzle

LMS 400 PRO - manual, semi automatic and automatic circular light metal saws for professional use

New



- high quality processed circular light metal saws for professional use
- precise angular cut from -45° to $+45^{\circ}$
- Saw head additionally tiltable by 45°
- easy and trouble-free operation
- serial with solid base to reduce vibrations

M type

- including manual vices

S type

- semi-automatic type incl. cooling system with flow control and pneumatic quick-action clamping device
- lowering of saw head manually, cooling system and quick action clamping are automatically activated

P type

- automatic type including cooling system with flow control, pneumatic quick-action clamping and pneumatic lowering of saw head at adjustable feed and return speed
- the cutting process is triggered by a push on a button and the saw head is automatically lowered at the same time the cooling system and quick-action clamping are activated



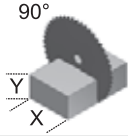
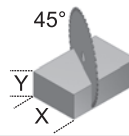
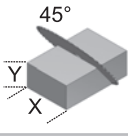
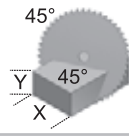
LMS 400 PRO S

LMS 400 PRO P



- P model with automatic pneumatic lowering of saw head

Cutting capacities LMS 400 PRO M / S / P

 <p>90°</p> <p>X = 210 mm Y = 115 mm</p>	 <p>45°</p> <p>X = 150 mm Y = 115 mm</p>
 <p>45°</p> <p>X = 210 mm Y = 80 mm</p>	 <p>45°</p> <p>X = 90 mm Y = 80 mm</p>

HM saw blades LMS 400 PRO	Item No	€ plus VAT
400 x 4.2 x 30 mm, Z 60 positive, for solid non-ferrous material	365 0400	139.00
400 x 3.8 x 30 mm, Z 96 TF negative, for non-ferrous profiles	365 0401	159.00

Model	LMS 400 PRO M	LMS 400 PRO S	LMS 400 PRO P
Item No	362 6400	362 6401	362 6402
€ plus VAT	2'459.00	2'719.00	4'019.00

Technical data

Motor power 400 V / 50 Hz	2.2 kW	2.2 kW	2.2 kW
Speeds	2890 1/min	2890 1/min	2890 1/min
Saw blade diameter	400 mm	400 mm	400 mm
Air pressure quick-action clamping device	6 - 7 bar	6 - 7 bar	6 - 7 bar
Dimensions (LxWxH)	640 x 730 x 1410 mm	640 x 730 x 1410 mm	640 x 730 x 1420 mm
Weight	78 kg	80 kg	85 kg

LMS 400 PRO D - automatic double head circular light metal saws for professional use displaceable on the machine bed

New

- high quality processed circular light metal saws for professional use
- precise angular cut from -45° to $+45^\circ$
- saw head additionally tiltable by 45°
- displaceable on the machine bed
- including electrical pneumatic control system
- pneumatic hydraulic lowering of saw heads
- cooling system with flow regulation serially
- motors serially including motor break
- all models including 2 horizontal pneumatic quick action vices

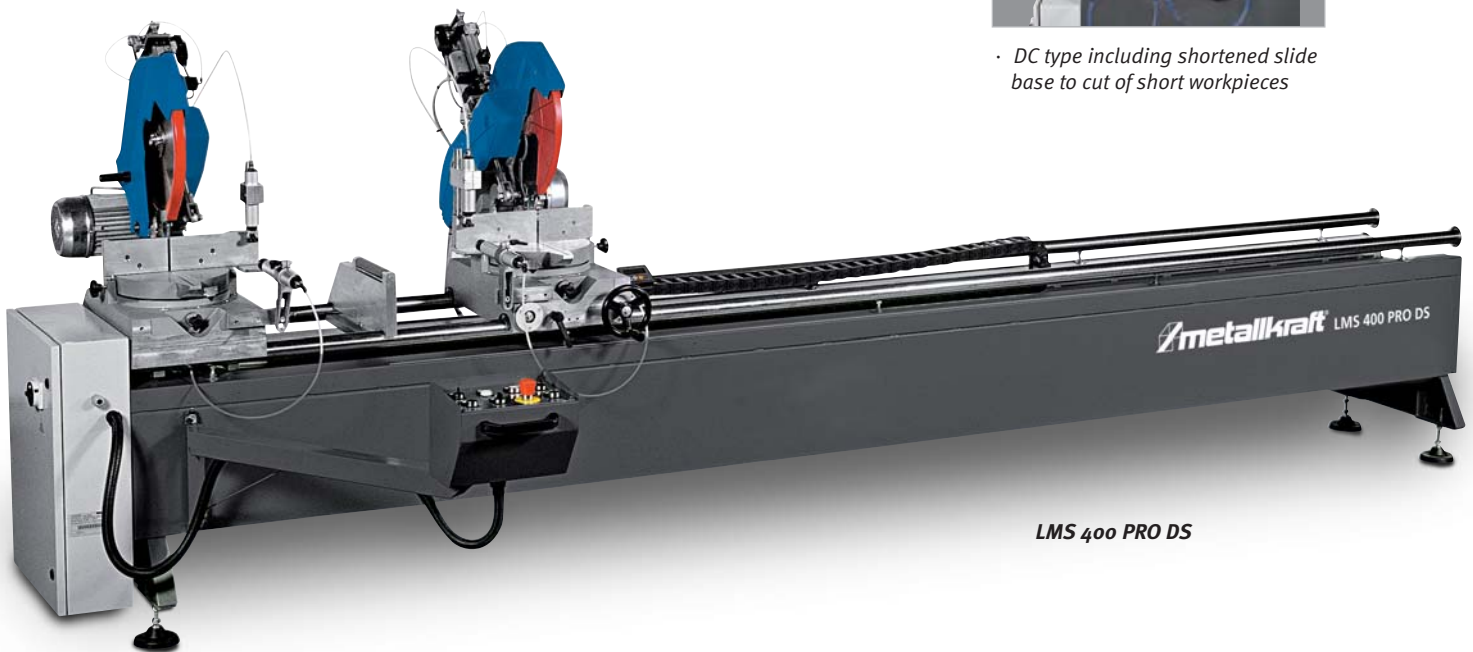
- DS type**
- including 2 vertical pneumatic quick-action vices
 - including standard sliding base (min. cutting length 485 mm)



- DC type**
- Intermediate restrained including 2 pneumatic quick-action vices
 - including shortened sliding base to cut short workpieces (min. cutting length 250 mm)



· DC type including shortened slide base to cut of short workpieces



LMS 400 PRO DS

Cutting capacities LMS 400 PRO DS / DC

X = 210 mm Y = 115 mm	X = 150 mm Y = 115 mm	X = 210 mm Y = 80 mm	DS: X min = 485 mm DC: X min = 250 mm	DS: X min = 485 mm DC: X min = 435 mm	DS: - DC: X min = 120 mm

Model	LMS 400 PRO DS	LMS 400 PRO DC
Item No	362 6404	362 6405
€ plus VAT	1'829.00	15'299.00
Technical data		
Motor power 400 V / 50 Hz	2.2 kW	2.2 kW
Speed	2890 1/min	2890 1/min
Saw blade diameter	400 mm	400 mm
Air pressure quick-action clamping device	6 - 7 bar	6 - 7 bar
Dimensions (LxWxH)	4000 x 1000 x 1500 mm	4000 x 1000 x 1500 mm
Weight	450 kg	450 kg

Accessories LMS 400 PRO DS / DC	Item No	€ plus VAT
Digital display of cutting length (up to 3200 mm)	364 5001	969.00
Extension of cutting length (additional charge per 1 m)	364 5002	809.00
Machine heads transposed (min. cutting length 900 mm)	364 5003	165.00

HM saw blades LMS 400 PRO	Item No	€ plus VAT
400 x 4.2 x 30 mm, Z 60 positive, for non-ferrous solid material	365 0400	139.00
400 x 3.8 x 30 mm, Z 96 TF negative, for non-ferrous profiles	365 0401	159.00

Saw blades for all Metallkraft circular saws

HKS 230	Item No	€ plus VAT
Saw blade for steel Ø 230x2.0x25.4 mm	385 0231	52.95
Saw blade for aluminium Ø 230x2.4x25.4 mm	385 0232	65.95
Saw blade for stainless steel Ø 230x1.8x25.4 mm	385 0233	69.95
MTS 356		
Saw blade for steel Ø 355x2.4x25.4mm Z66	385 3504	129.00
Saw blade for aluminium Ø 355x2.4x25.4mm Z80	385 3502	119.00
Saw blade for stainless steel Ø 355x2.4x25.4mm Z90	385 3503	159.00
Saw blade for steel Ø 305x2.4x25.4mm Z60	385 3051	109.00
MKS 250 N. MKS 255 N		
HSS saw blade DM05 Ø 250x2x32 mm t4	365 2504	59.00
HSS saw blade DM05 Ø 250x2x32 mm t6	365 2506	59.00
MKS 275 N		
HSS saw blade DM05 Ø 275x2.5x32mm t4	365 2754	79.00
HSS saw blade DM05 Ø 275x2.5x32mm t6	365 2756	79.00
HSS saw blade DM05 Ø 275x2.5x32mm t8	365 2758	79.00
MKS 315 N. MKS 315 R. MKS 316 R		
HSS saw blade DM05 Ø 315x2.5x32 mm t4	365 3154	105.00
HSS saw blade DM05 Ø 315x2.5x32 mm t6	365 3156	105.00
HSS saw blade DM05 Ø 315x2.5x32 mm t8	365 3158	105.00
Saw blades for stainless steel MKS 315 R		
HSS -E saw blade Ø 315x2.5x32 mm t4	365 3254	149.00
HSS -E saw blade Ø 315x2.5x32 mm t6	365 3256	149.00
MKS 350. MKS 351. MKS 350 H		
HSS saw blade DM05 Ø 350x2.5x32 mm t4	365 3504	129.00
HSS saw blade DM05 Ø 350x2.5x32 mm t6	365 3506	129.00
Saw blades for stainless steel MKS 351		
HSS -E saw blade Ø 350x2.5x32 mm t4	365 3514	169.00
HSS -E saw blade Ø 350x2.5x32 mm t6	365 3516	169.00

MKS 315 V, MKS 316 V	Item No	€ plus VAT
HSS saw blade DM05 Ø 315x2.5x32 mm t4	365 3154	105.00
HSS saw blade DM05 Ø 315x2.5x32 mm t6	365 3156	105.00
HSS saw blade DM05 Ø 315x2.5x32 mm t8	365 3158	105.00
Saw blades for stainless steel MKS 316 V		
HSS -E saw blade Ø 315x2.5x32 mm t4	365 3254	149.00
HSS -E saw blade Ø 315x2.5x32 mm t6	365 3256	149.00
MKS 350 V		
HSS saw blade DM05 Ø 350x2.5x32 mm t4	365 3504	129.00
HSS saw blade DM05 Ø 350x2.5x32 mm t6	365 3506	129.00
HSS saw blade DM05 Ø 350x2.5x32 mm t8	365 3508	129.00
HSS saw blade DM05 Ø 350x2.5x32 mm t10	365 3510	129.00
MKS 315 VH		
HSS saw blade DM05 Ø 315x2.5x32 mm t4	365 3154	105.00
HSS saw blade DM05 Ø 315x2.5x32 mm t6	365 3156	105.00
HSS saw blade DM05 Ø 315x2.5x32 mm t8	365 3158	105.00
MKS 350 VH		
HSS saw blade DM05 Ø 350x2.5x32 mm t4	365 3504	129.00
HSS saw blade DM05 Ø 350x2.5x32 mm t6	365 3506	129.00
HSS saw blade DM05 Ø 350x2.5x32 mm t8	365 3508	129.00
HSS saw blade DM05 Ø 350x2.5x32 mm t10	365 3510	129.00
LMS 400. LMS 400 H. LMS 400 A		
HM saw blade Ø 400x4.0x32 mm Z96	365 4048	185.00
HM saw blade Ø 400x3.0x32 mm Z84	365 4049	185.00
LMS 400 PRO		
HM Saw blade		
pos. for non-ferrous solid material Ø 400x4.2x30 mm Z60	365 0400	139.00
HM Saw blade		
neg. for non-ferrous profiles Ø 400x3.8x30 mm Z96	365 0401	159.00

Tooth pitch (t)

Make sure to use the correct tooth pitch when choosing the appropriate saw blade to cut a material which is the condition for a good cutting result. An easy rule is that you have to choose the smallest tooth pitch which guarantees a good chip ejection from the cutting zone. This rule does not help to find the tooth pitch however it explains the logic for the right choice.

It is necessary to know the following parameters to make the right choice: 1. Material cross section of the material, 2. Material type, 3. Application respectively

cutting procedure

Cutting speed and feed

The choice of the correct saw blade speed and feed speed is decisive to optimize the cutting process. There is a close relationship between both speeds. If for instance the saw blade speed is too high in relation to the feed of the saw unit the workpiece is rather polished than machined. The saw blade is overheating and is worn without attaining machining performance.

The following table includes recommendations for the correct use of our metal circular saw blades which of course are only approximate values:

	Steels to 1500 N/m ²	Steels to 1800 N/m ²	Steels to 1200 N/m ²	Stainless steels	Cast	Aluminium	Bronze / copper	Brass
Tubes / Profiles								
Wall thickness								
to 1 mm	3	3	3	3	-	4	4	4
1-1.5 mm	4	4	3	4	-	5	5	5
1.5-2 mm	5	4	4	5	-	6	6	6
2-3 mm	5	5	5	5	-	7	7	7
from 3 mm on	6	6	5	6	-	8	8	8
Solid material								
Cross section								
10-20 mm	5	5	5	5	5	6	6	8
20-40 mm	8	6	6	6	6	8	8	10
40-60 mm	10	10	8	8	8	12	10	12
60-90 mm	12	12	10	11	11	16	13	14
90-110 mm	14	14	12	14	14	18	15	17
110-130 mm	16	16	14	16	16	20	17	19
130-150 mm	18	16	14	16	16	20	19	20
Tooth pitch t (mm)								
Feed A (mm/min) for full material pipes/profiles								
3	350-450	250-350	90-160	70-150	350-550	-	-	-
4	300-400	200-300	80-140	60-130	280-440	-	-	-
5	250-350	150-250	70-130	55-110	210-350	-	-	-
6	200-300	100-180	60-120	50-90	180-300	-	1400-2000	2000-4000
8	150-250	80-130	35-90	40-75	140-250	4500-8500	1000-1600	1500-3200
10	100-200	70-100	40-80	35-65	120-180	3800-6000	700-1200	1000-2500
12	80-150	65-90	35-65	30-55	90-150	3000-5000	550-850	800-1800
14	70-130	60-80	25-50	20-50	75-125	2800-4600	500-700	700-1400
16	50-120	55-70	15-40	15-35	65-110	2500-3700	400-600	600-1000
Saw blade Ø								
rpm								
250 mm	40-65	25-50	20-30	15-25	40-65	750-1100	250-380	500-700
300 mm	30-55	20-45	15-25	10-20	30-55	650-950	210-320	430-640
315 mm	30-50	20-40	15-25	10-20	30-50	600-900	200-300	400-600
350 mm	25-45	20-35	15-25	10-20	25-45	550-820	180-270	350-550
400 mm	20-40	15-30	10-20	8-15	20-40	470-720	160-240	300-480

Unicraft UF 230 - Universal chassis to displace saws, grinding machines, drilling machines, planing machines, etc.

- up to a loading capacity of 230 kg
- for easy transporting and dislocating your machine
- safe and stable construction
- rapid and easy assembly
- wheels can be turned by 360°, this way easy dislocating of the machines
- with vibration-damping feet
- as standard with two guide rollers and holding brakes
- the perforations allows lots of different sizes, this way universally applicable



Model	UF 230
Item No	619 0230
€ plus VAT	59.00

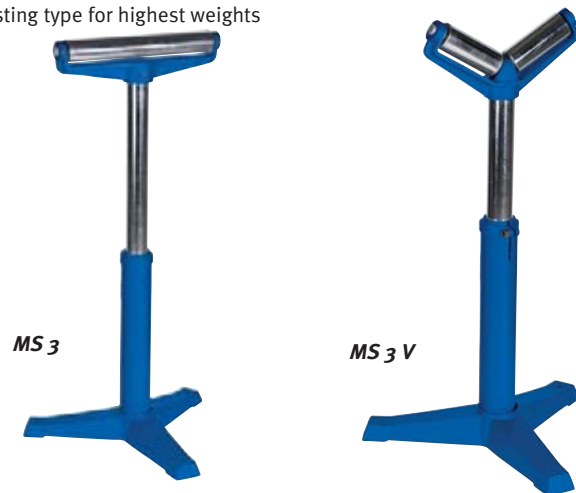
Technical data	
Minimum size square	280 x 280 mm
Maximum size square	890 x 890 mm
Minimum size rectangular	430 x 280 mm
Maximum size rectangular	1290 x 480 mm
Hole spacing	25 mm
Loading capacity	230 kg

Material stand MS 3 - infinitely variable height-adjustable, capable of bearing up to 700 kg

- to support long and heavy workpiece
- universally applicable for e.g. circular metal saws, belt saws, wood working machines, etc.
- roller support is infinitely variable height-adjustable and can be clamped
- safe workpiece support due to steel rollers which are massive high capable of bearing
- heavy tripod casting type for highest weights

Model	MS 3	MS 3 V
Item No	366 0700	366 0705
€ plus VAT	59.00	59.00

Technical data		
Loading capacity	700 kg	700 kg
Length	350 mm	2 x 125 mm
Height min. / max.	580/790 mm	580/790 mm
Type	steel rollers	steel rollers
Roller diameter	52 mm	52 mm

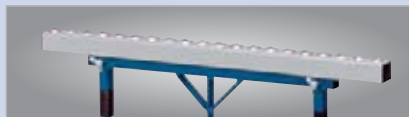


Material stand MS 4 - infinitely variable adjustable

- different types of rollers available
- roller support infinitely variable height-adjustable
- special wide support
- universally applicable



MS 4 R



MS 4 K

Model	MS 4	MS 4 R	MS 4 K
Item No	366 0110	366 0111	366 0112
€ plus VAT	459.00	495.00	549.00

Technical data			
Loading capacity	500 kg	500 kg	500 kg
Length	700 mm	980 mm	1000 mm
Height min. / max.	760/1030 mm	700/960 mm	700/960 mm
Type	plastic roller	rail with rollers on all sides	rail with ball rollers
Roller diameter	90 mm	-	-



MS 4

MRB LC - the roller and measuring conveyor system of light construction with a loading capacity of 100 kg per meter roller conveyor

- roller and measuring conveyor system on which it is possible to precisely saw, drill or mill light-weighted wood, metal or plastic profiles
- substructure made of solid 3 mm steel profiles, lacquered and with adjustable feet
- support rollers made of galvanized steel, optionally plastic support rollers with a surcharge of 4%

Special MRB LC-B and MRB LC-E

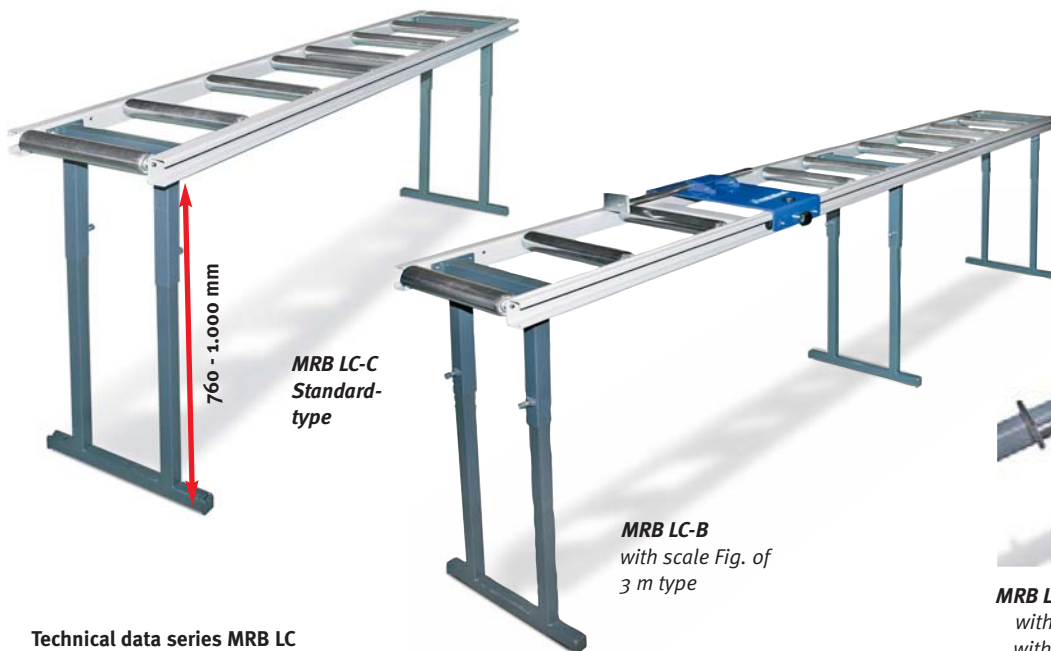
- stop carriage is mounted 4 fold on roller bearings, thus manually easily adjustable
- stop arm adjustable and can be folded away to the rear



Quality made in Germany



- MRB LC-B & MRB LC-E: as standard with magnifier for an easy reading of the millimetre scale



760 - 1.000 mm

MRB LC-C
Standard-type

MRB LC-B
with scale Fig. of
3 m type



MRB LC-E

with magnetic tape, length measuring equipment with digital display and quadruple stop carriage mounted on roller bearings

Technical data series MRB LC

Roller diameter	50 mm
Shaft diameter	8 mm
Usable roller width	300 mm
Loading capacity per meter	100 kg/m
Working height	760 - 1.000 mm

Optional

- All roller conveyors of the series MRB LC are also available with plastic support roller. For these types the basic price increases by 5%.
- Additional support stand for MRB LC-C, LC-B and LC-E Item No 366 3000; € 75.00 plus VAT

MRB LC-C

Supply roller conveyors without longitudinal dead limit and without measuring system

Length	Roller conveyor stands	Item No	€ plus VAT
2 m	2	366 2320	369.00*
3 m	3	366 2330	529.00*
4 m	3	366 2340	669.00*
5 m	4	366 2350	825.00**
6 m	5	366 2360	985.00**

* for roller conveyors with a length of 2 to 4 m € 45.00 plus VAT packing cost will be invoiced for each roller conveyor
** for roller conveyors with a length of 5 to 8 m € 78.00 plus VAT packing cost will be invoiced for each roller conveyor

MRB LC-B

Stop conveyor with longitudinal dead limit, manual measuring system with mm scale and reading magnifier, stop adjustable and can be folded away to the rear

Length	Roller conveyor stands	Item No	€ plus VAT
2 m	2	366 2220	529.00*
3 m	3	366 2230	719.00*
4 m	3	366 2240	885.00*
5 m	4	366 2250	1'069.00**
6 m	5	366 2260	1'269.00**

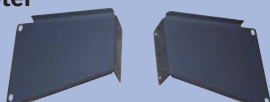
MRB LC-E

Roller conveyor with longitudinal dead limit, magnetic tape measuring system with digital display, otherwise same as MRB LC-B

Length	Roller conveyor stands	Item No	€ plus VAT
2 m	2	366 2420	1'025.00*
3 m	3	366 2430	1'239.00*
4 m	3	366 2440	1'435.00*
5 m	4	366 2450	1'649.00**
6 m	5	366 2460	1'869.00**

Assembly adapter

for the solid fixing of roller conveyors of the series MRB LC on Metallkraft circular metal saws. The adapter pieces are specially designed for the assembly on the right and on the left on the saws.



Assembly adapter

Saw type	Assembly position	Item No	€ plus VAT
MKS250N	r	367 2201	105.00
MKS250N	l	367 2101	105.00
MKS315N	r	367 2202	105.00
MKS315N	l	367 2102	105.00
MKS315V	r	367 2204	79.90

Assembly adapter

Saw type	Assembly position	Item No	€ plus VAT
MKS315V	l	367 2104	79.90
MKS350V	r	367 2205	105.00
MKS350V	l	367 2105	79.90
LMS400	r	367 2203	105.00
LMS400	l	367 2103	79.90

MRB standard - the roller and measuring conveyor system of stable construction with a loading capacity of 300 kg per meter roller conveyor

- solid U-shaped closed design made of 3 mm steel sheet profile
- support rollers made of galvanized steel
- all roller conveyors of the series MRB standard are also available with plastic support rollers (in this case the basic price increases by 4 %)
- ball-bearing mounted support rollers

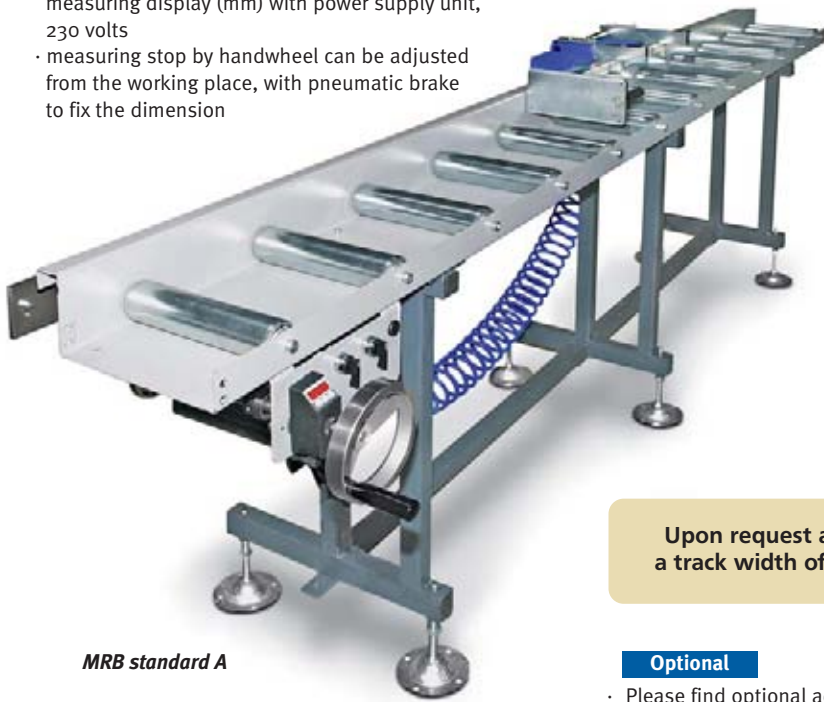
MRB standard A

- length measuring equipment with handwheel adjustment
- roller and measuring conveyor with LED measuring display (mm) with power supply unit, 230 volts
- measuring stop by handwheel can be adjusted from the working place, with pneumatic brake to fix the dimension

- solid material stop carriage, 12-fold ball bearing mounted, adjustable to largely dimensioned guide profiles; the stop arm is adjustable and can be folded away
- for roller conveyors of more than 5 m track length, a cable carriers is being used
- installation side as required on the right or on the left
- the maximum measuring length is the conveyor length minus the stop length

Technical data

Roller diameter	60 mm
Shaft diameter	15 mm
Usable roller width	250/350 mm
Loading capacity per meter	300 kg/m
Feet height-adjustable	+/- 60 mm
Working height	880 mm

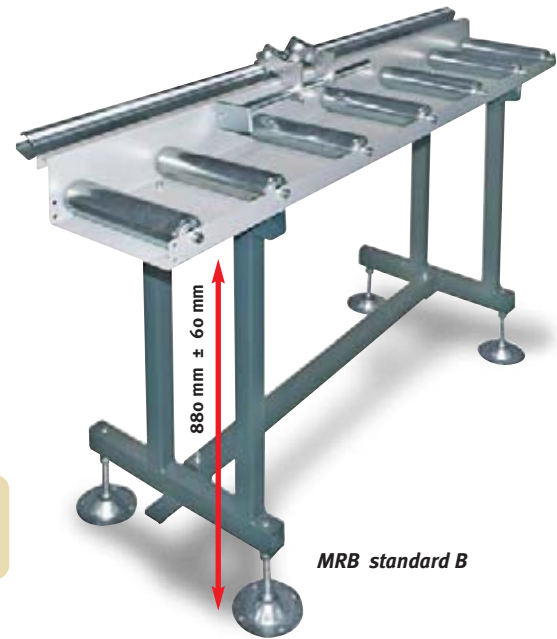


MRB standard A

Upon request also with a track width of 500 mm!

Optional

- Please find optional accessories for the series MRB standard on the following pages



MRB standard B



- 5-digit LED measuring display for continuous control of the current status of the stop carriage accurate to the millimetres
- position display with directly on the driveshaft mounted hollow shaft rotary position transducer as standard
- measuring accuracy 2/10 mm per meter



- with solid 900 mm long stop arm
- stop plate adjustable to the zero point and can be manually folded away to the rear
- manifold ball-bearing mounted, therefore free of play

MRB standard A - track width 300 mm (usable roller width 250 mm)

Length conveyor stands	Roller	Item No	€ plus VAT
1m	2	366 1111	1'699.00*
2m	2	366 1112	1'225.00*
3m	3	366 1113	2'399.00*
4m	3	366 1114	2'625.00*
5m	4	366 1115	2'975.00*
6m	5	366 1116	3'619.00**
7m	5	366 1117	4'039.00**
8m	6	366 1118	4'479.00**

MRB standard B - track width 300 mm (usable roller width 250 mm)

Length conveyor stands	Roller	Item No	€ plus VAT
1m	2	366 1211	589.00*
2m	2	366 1212	899.00*
3m	3	366 1213	1'119.00*
4m	3	366 1214	1'259.00*
5m	4	3661215	1'569.00**
6m	5	366 1216	1'875.00**
7m	5	366 1217	2'129.00**
8m	6	366 1218	2'419.00**

MRB standard A - track width 400 mm (usable roller width 350 mm)

Length conveyor stands	Roller	Item No	€ plus VAT
1m	2	366 1121	1'725.00*
2m	2	366 1122	2'289.00*
3m	3	366 1123	2'515.00*
4m	3	366 1124	2'825.00*
5m	4	366 1125	3'299.00**
6m	5	366 1126	3'829.00**
7m	5	366 1127	4'265.00**
8m	6	366 1128	4'749.00**

MRB standard B - track width 400 mm (usable roller width 350 mm)

Length conveyor stands	Roller	Item No	€ plus VAT
1m	2	366 1221	609.00*
2m	2	366 1222	965.00*
3m	3	366 1223	1'229.00*
4m	3	366 1224	1'379.00*
5m	4	366 1225	1'729.00**
6m	5	366 1226	2'079.00**
7m	5	366 1227	2'349.00**
8m	6	366 1228	2'695.00**

* for roller conveyors with a length of 2 to 4 m € 45.00 plus VAT packing cost will be invoiced for each roller conveyor

** for roller conveyors with a length of 5 to 8 m € 78.00 plus VAT packing cost will be invoiced for each roller conveyor



Quality made
in Germany

MRB standard B

- with length measuring equipment
- roller and measuring conveyor with mm scale, manual measuring system with C guide profile and displaceable hinged stop

MRB standard C

- supply/conveyance roller conveyor
- roller conveyor without scale and stop with lateral guide

MRB standard E

- type same as standard B
- with battery-operated LCD display with magnetic tape measuring system

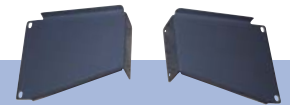


MRB standard C



MRB standard E

! Please indicate the installation side and installation height when placing your purchase order!
Working height up to 1130 mm due to optional foot plates



Assembly adapter on Metallkraft circular metal saws

for the series MRB standard on Metallkraft circular metal saws; the adapter pieces are specially designed for the assembly on the right and on the left on the saws. Please indicate the machine type of your saw when submitting your purchase order.

MRB standard C - track width 300 mm (usable roller width 250 mm)

Length	Roller conveyor stands	Item No	€ plus VAT
1m	2	366 1311	369.00*
2m	2	366 1312	625.00*
3m	3	366 1313	735.00*
4m	3	366 1314	920.00*
5m	4	366 1315	1'159.00**
6m	5	366 1316	1'395.00**
7m	5	366 1317	1'579.00**
8m	6	366 1318	1'815.00**

MRB standard E - track width 300 mm (usable roller width 250 mm)

Length	Roller conveyor stands	Item No	€ plus VAT
1m	2	366 1411	1'215.00*
2m	2	366 1412	1'275.00*
3m	3	366 1413	1'390.00*
4m	3	366 1414	1'599.00*
5m	4	366 1415	1'785.00**
6m	5	366 1416	2'039.00**
7m	5	366 1417	2'235.00**
8m	6	366 1418	2'495.00**

MRB standard C - track width 400 mm (usable roller width 350 mm)

Length	Roller conveyor stands	Item No	€ plus VAT
1m	2	366 1321	383.00*
2m	2	366 1322	652.00*
3m	3	366 1323	828.00*
4m	3	366 1324	987.00*
5m	4	366 1325	1'244.00**
6m	5	366 1326	1'511.00**
7m	5	366 1327	1'700.00**
8m	6	366 1328	1'967.00**

MRB standard E - track width 400 mm (usable roller width 350 mm)

Length	Roller conveyor stands	Item No	€ plus VAT
1m	2	366 1421	1'235.00*
2m	2	366 1422	1'345.00*
3m	3	366 1423	1'435.00*
4m	3	366 1424	1'649.00*
5m	4	366 1425	1'955.00**
6m	5	366 1426	2'255.00**
7m	5	366 1427	2'475.00**
8m	6	366 1428	2'775.00**

For assembly of the MRB standard types (300 mm):

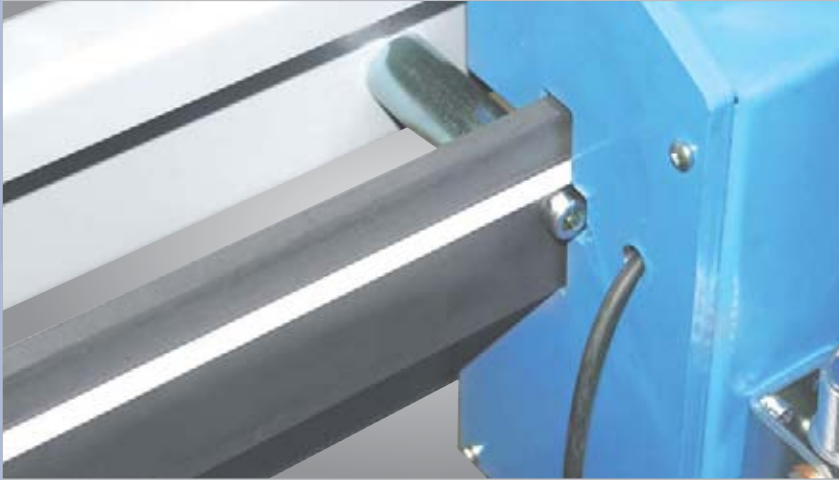
Saw type	Assembly position	Item No	€ plus VAT
MKS250N	r	367 1211	105.00
MKS250N	l	367 1111	105.00
MKS315N	r	367 1212	105.00
MKS315N	l	367 1112	105.00
MKS315V	r	367 1214	105.00
MKS315V	l	367 1114	105.00
MKS350V	r	367 1215	105.00
MKS350V	l	367 1115	105.00
LMS400	r	367 1213	105.00
LMS400	l	367 1113	79.00

For assembly of the MRB standard types (400 mm):

Saw type	Assembly position	Item No	€ plus VAT
MKS250N	r	367 1221	105.00
MKS250N	l	367 1121	105.00
MKS315N	r	367 1222	105.00
MKS315N	l	367 1122	105.00
MKS315V	r	367 1224	105.00
MKS315V	l	367 1124	105.00
MKS350V	r	367 1225	105.00
MKS350V	l	367 1125	105.00
LMS400	r	367 1223	105.00
LMS400	l	367 1123	79.00

* for roller conveyors with a length of 2 to 4 m € 45.00 plus VAT packing cost will be invoiced for each roller conveyor
** for roller conveyors with a length of 5 to 8 m € 78.00 plus VAT packing cost will be invoiced for each roller conveyor

Optional accessories - extensions for the roller and measuring conveyor system MRB standard for more effective and time-saving working



Direct magnetic tape measuring system

- delivery of direct magnetic type measuring system including the display device Z58
- drive of the stop carriage and letting of length dimensions independent from one another
- measuring display is performed via display device Z58

- sensor head directly mounted to the stop carriage
- measuring and repeating accuracy amounts to ± 0.1 mm per metre
- cable and air duct guidance is performed via an energy chain guidance



Quality made in Germany

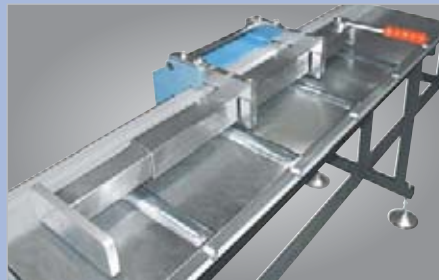
Length	Item No	€ plus VAT
2 m	367 2232	931.00
3 m	367 2233	1'032.00
4 m	367 2234	1'205.00
5 m	367 2235	1'307.00
6 m	367 2236	1'461.00
7 m	367 2237	1'581.00
8 m	367 2238	1'735.00



Display device Z58

- for comfortable reading of the present value on a 1/10 mm display
- includes the input signals via a magnetized pole ring and a sensor head which are directly mounted on the drive shaft
- measuring accuracy amounts to ± 0.2 mm per metre
- easy-to-read

Item No 367 2220; € plus VAT 604.00



Spring-mounted stop arm SZ 05

- with spring-mounted material stop arm
- adjustable up to the 0 point
- can be manually folded away to the rear
- equipped with an excenter lever for release

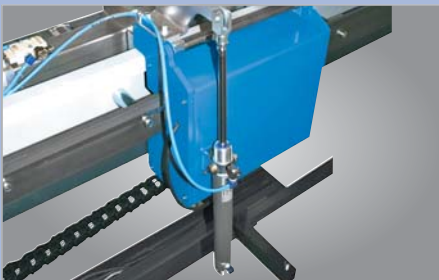
Item No 367 2221; € plus VAT 516.00



Pneumatic arm retraction

- ideal for mitre cutting
- no canting of the workpiece
- pneumatic arm retraction (release) from the material stop
- release stroke 10 mm
- can only be delivered together with the spring-mounted stop arm SZ 05

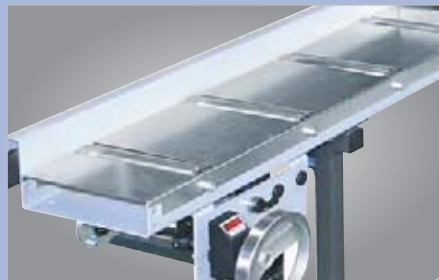
Item No 367 2222; € plus VAT 310.00



Material arm can be pneumatically folded away

- appliance for pneumatic folding away the material arm to the rear
- pneumatic cylinder performs this task at the push of a button easily and comfortably from the central operator's control panel

Item No 367 2223; € plus VAT 352.00



Galvanized cover plate

- cover plates for assembly between the support roller cover plates can be mounted
- electro galvanized
- removable if necessary
- price per running metre steel sheet

Item No 367 2224; € plus VAT 86.00



Optional roller conveyor feet for table heights of up to 1130 mm

- Foot plate including spindle M 16 x 250 mm
- Lifting three working height up to up to 1130 mm

Item No 367 9000; € plus VAT 24.00 / pc.